

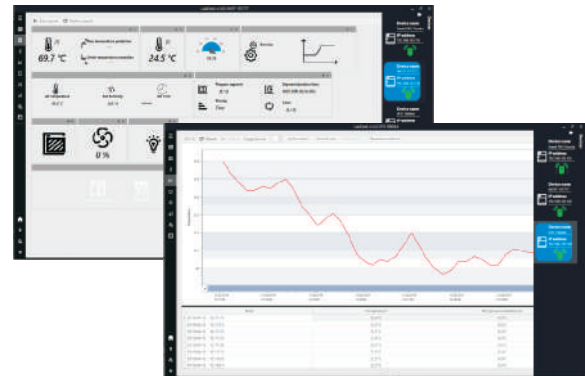


All POL-EKO Smart and Smart PRO units can be connected to the Ethernet network and monitored remotely using the LabDesk application. The software also enables remote control of the Smart PRO models.



The application has the following functionalities

- simultaneously connect several Smart PRO units
- control units remotely
- overview of current temperature (and humidity)
- overview of running program status
- alarm information
- download registered data / events
- generate reports
- produce charts



### Main features

	Smart	Smart PRO
dongle required	Yes	No
control unit remotely	No	Yes
monitor unit remotely	Yes	Yes
max number of connected units	10	infinity
save real-time running program data to the file	No	Yes
option to create programs and upload them remotely	No	Yes
start / stop programs	No	Yes
modify existing programs	No	Yes
create programs offline	No	Yes
set a delayed start for a program	No	Yes
overview of current data statistics	Yes	Yes
generate reports from current statistics	Yes	Yes
generate reports/ charts from registry or events data file	Yes	Yes
option to create schedules and upload them remotely	No	Yes
open registry data file / events downloaded from the unit	Yes	Yes
user management panel	Yes	Yes
change time zone	No	Yes
unit interface settings	No	Yes
change temperature correction	No	Yes
set alarms	No	Yes
edit users	No	Yes